



# Foster Care Community of Practice (CoP): Learning Cycle 1

Kristin Kelly | Kathleen McNaught | Fanny Lee | Sneha Barve

September 19, 2019



**State Support Network**

Partnering for School Improvement

# Objectives for today's webinar

1. Identify the mission, goals, and structure of the CoP.
2. Identify topics and discussion priorities for learning cycles 2-5.
3. Share examples and resources or questions and needs regarding the education of students experiencing foster care.

# Meet the team



Kristin Kelly

*CoP subject  
matter expert*  
*State Support  
Network*



Kathleen  
McNaught

*CoP subject  
matter expert*  
*State Support  
Network*



Fanny Lee

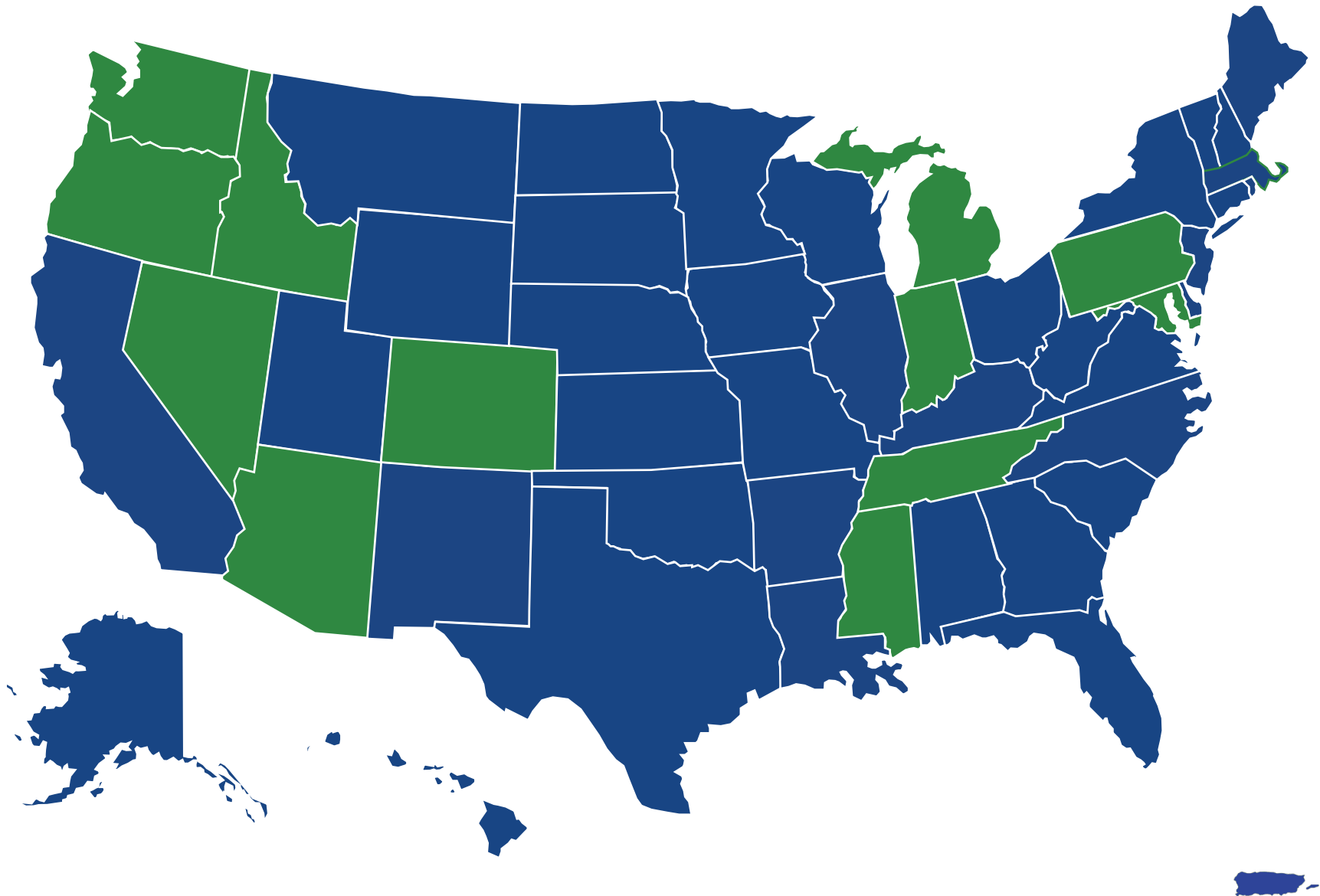
*CoP facilitator*  
*State Support  
Network*



Sneha Barve

*CoP support staff*  
*State Support  
Network*

# Welcome to the CoP!



# State Support Network

Purpose and approach

**We are...**  
**a technical**  
**assistance**  
**initiative**  
**designed to**  
**support**  
**state and**  
**district school**  
**improvement**  
**efforts.**



# Network Technical Assistance Approach

Improve Student  
Outcomes

Implementation  
and Scale-Up

Sustained Learning  
Communities

Building  
Capacity for  
Improvement

Identified State,  
Regional, and  
National Needs

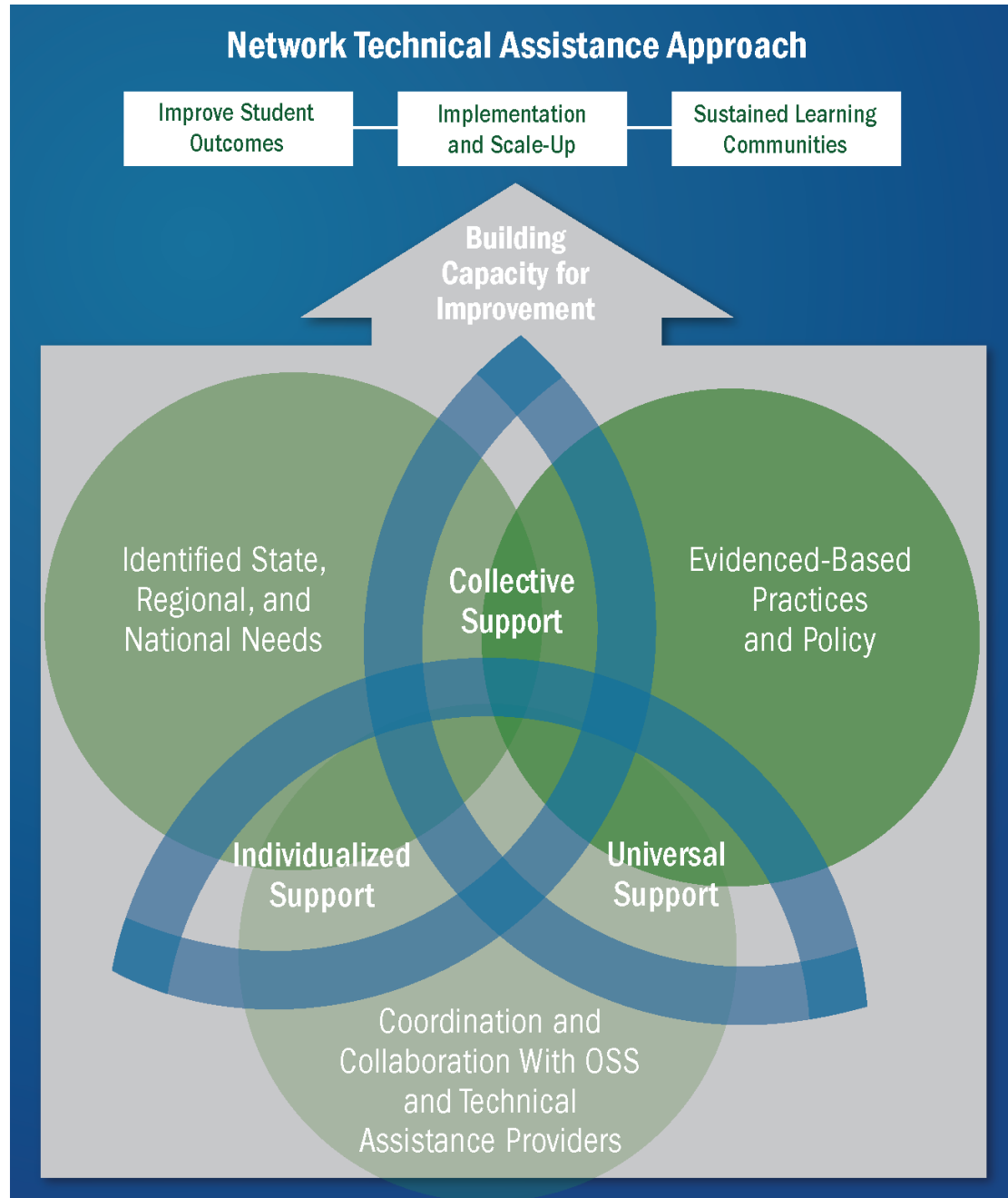
Evidenced-Based  
Practices  
and Policy

Collective  
Support

Individualized  
Support

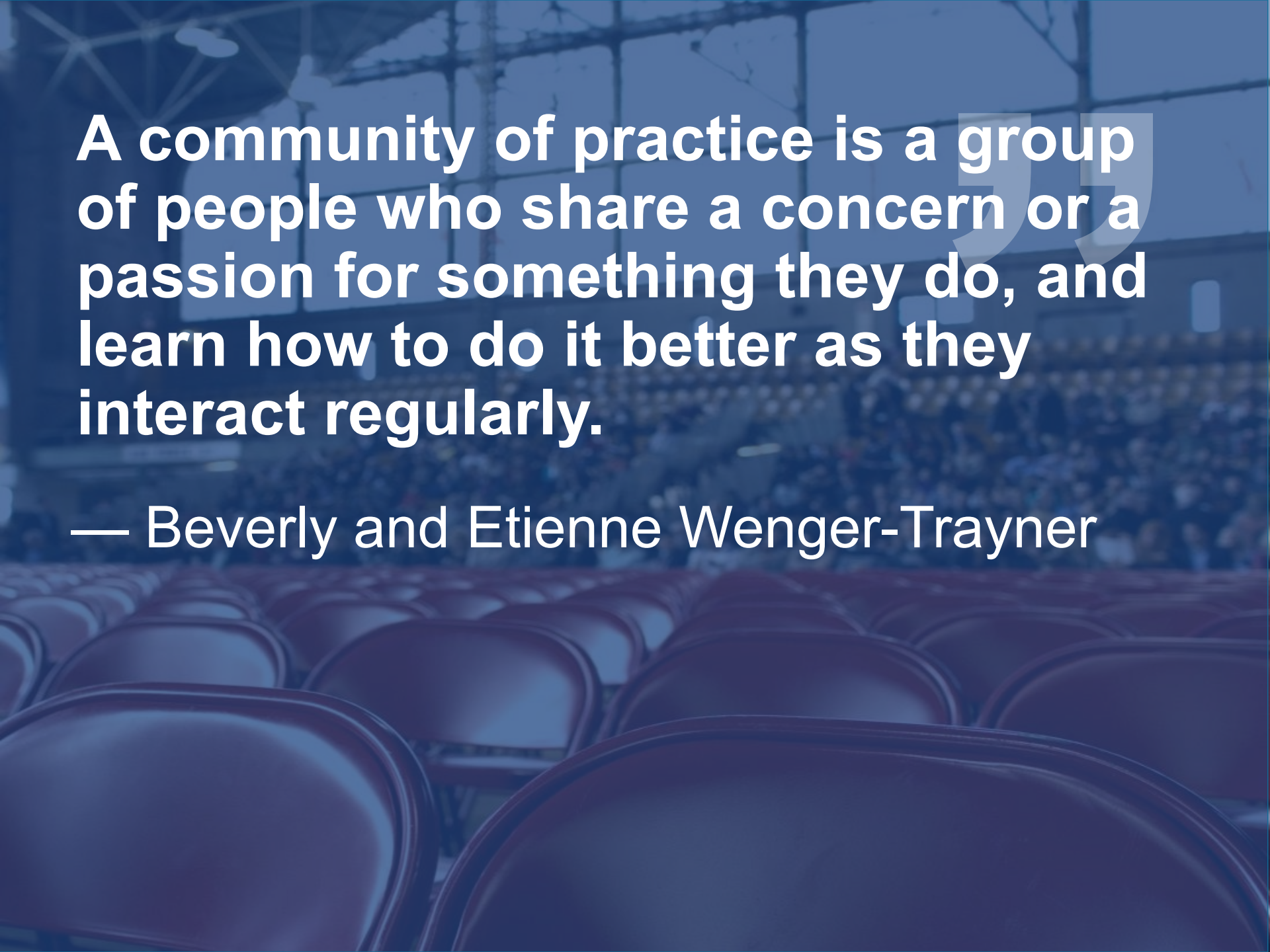
Universal  
Support

Coordination and  
Collaboration With OSS  
and Technical  
Assistance Providers



# Our CoP

Structure and objectives

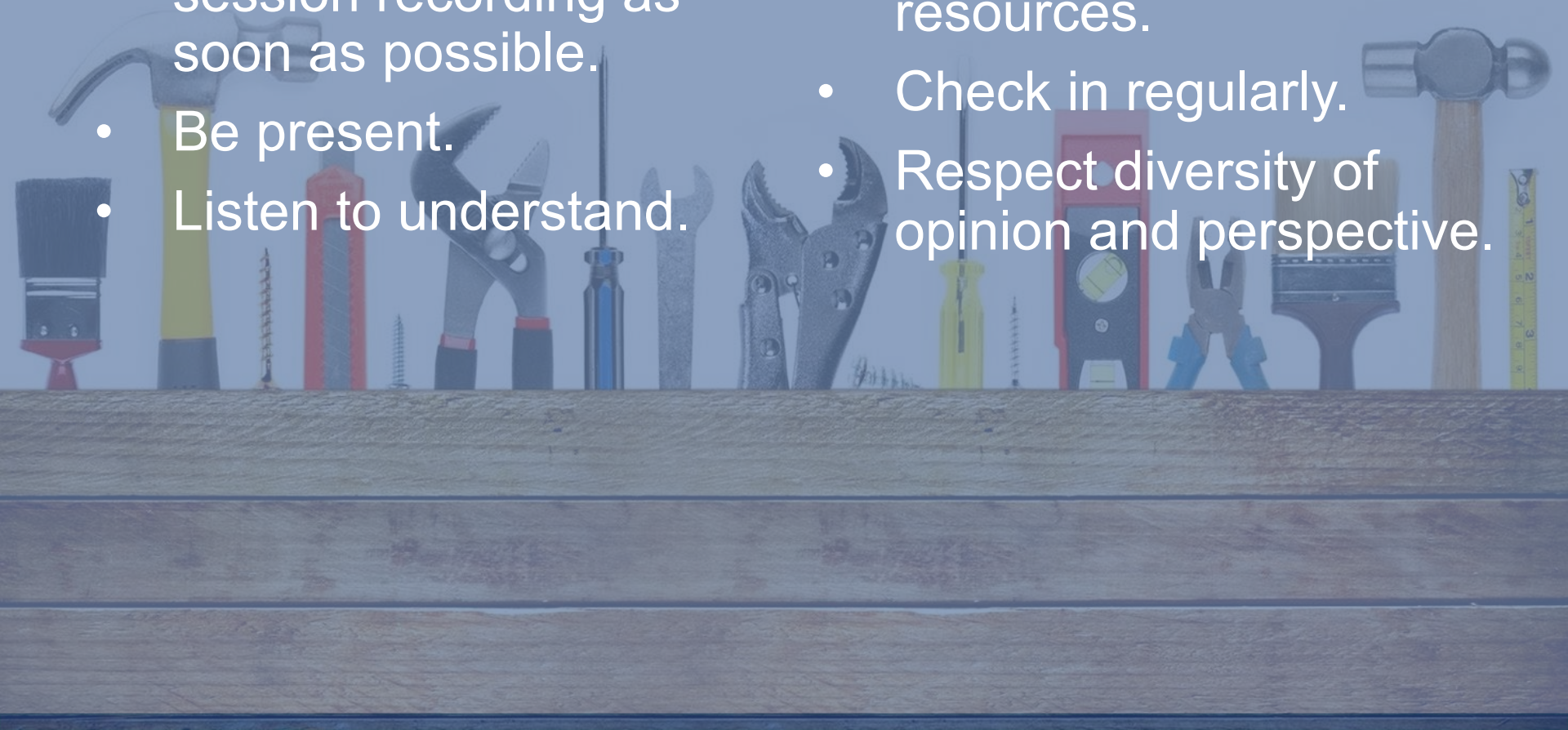


**A community of practice is a group of people who share a concern or a passion for something they do, and learn how to do it better as they interact regularly.**

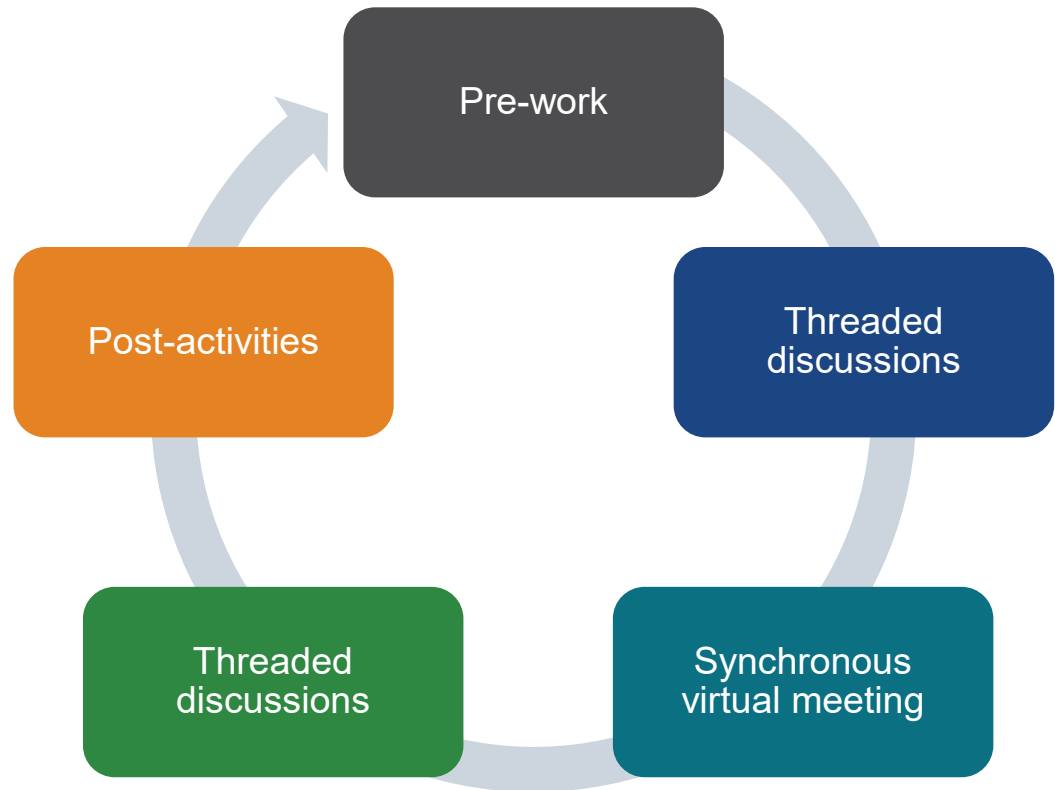
**— Beverly and Etienne Wenger-Trayner**

# Expectations for CoP participation

- Attend all meetings or review the archived session recording as soon as possible.
- Be present.
- Listen to understand.
- Actively contribute.
- Share ideas and resources.
- Check in regularly.
- Respect diversity of opinion and perspective.



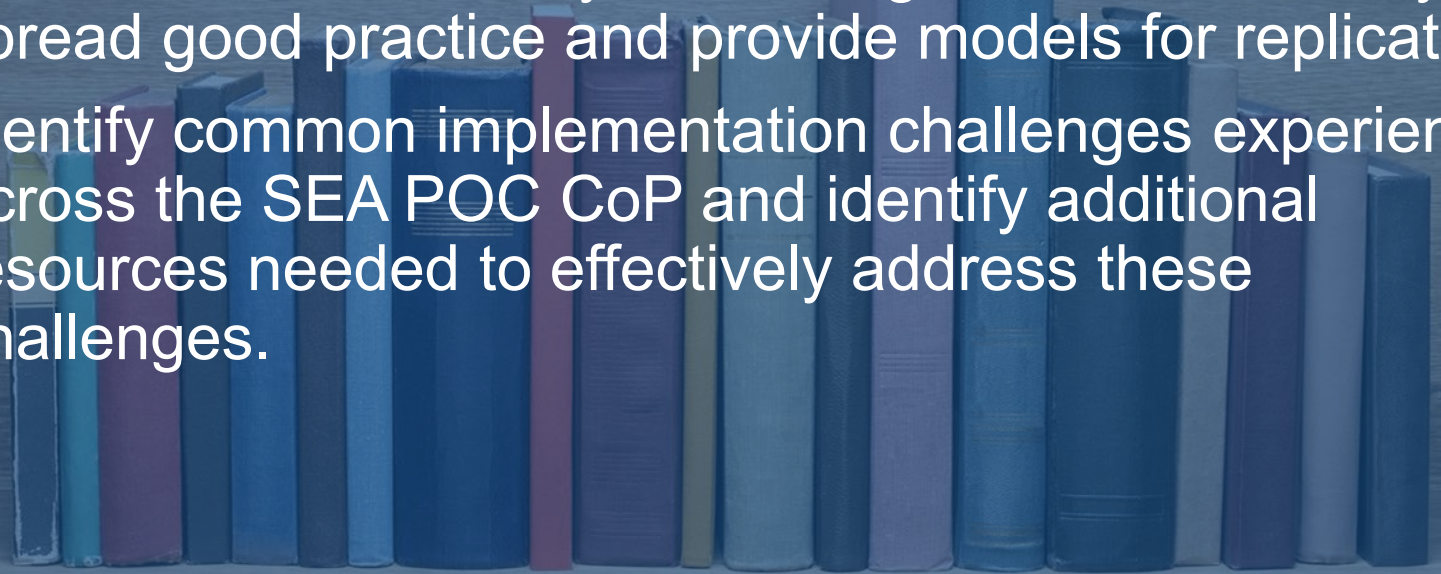
# Learning cycles



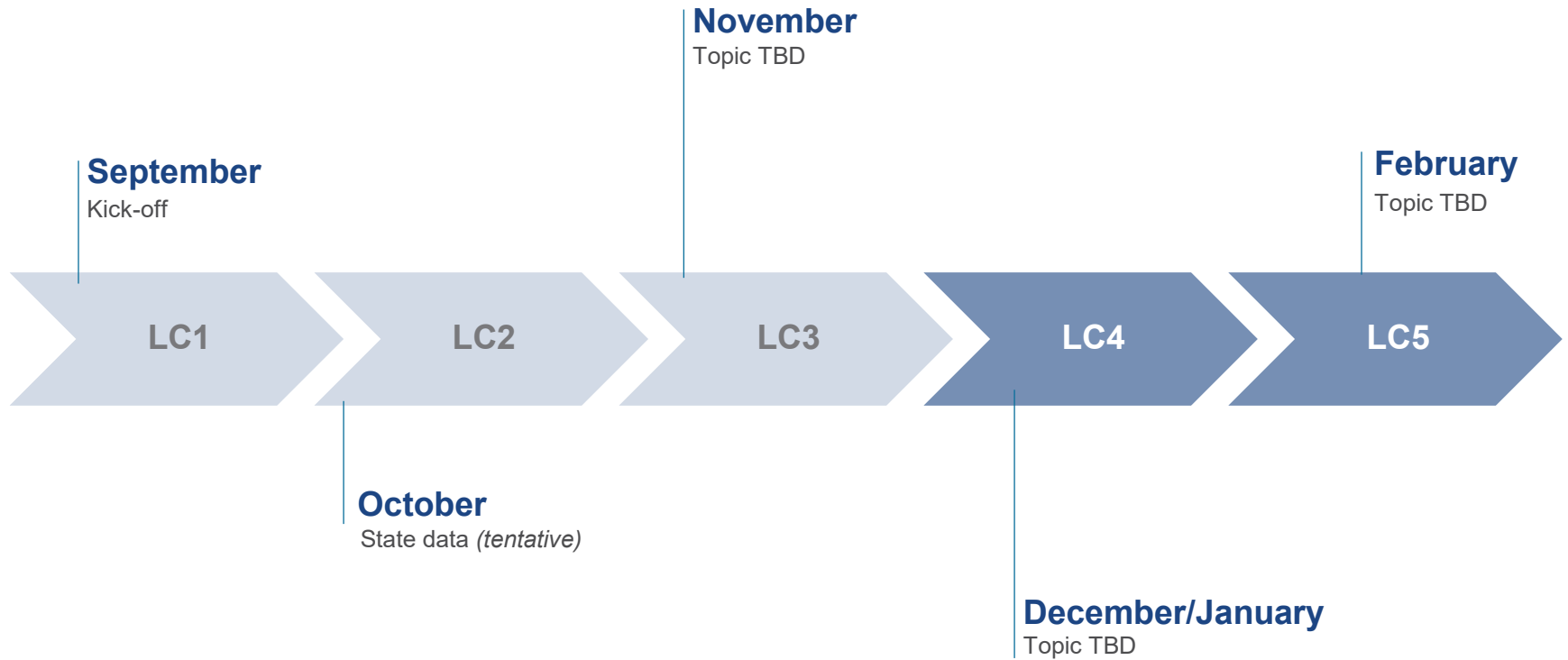
**Asynchronous +  
synchronous =  
full CoP experience**

# Overall CoP objectives

- Facilitate networking and partnerships among similarly experienced SEA points of contact (POCs) to establish a community that can support and enhance the complex role of supporting students in foster care.
- Identify and share effective practices and tools with one another, and eventually with a larger SEA community, to spread good practice and provide models for replication.
- Identify common implementation challenges experienced across the SEA POC CoP and identify additional resources needed to effectively address these challenges.

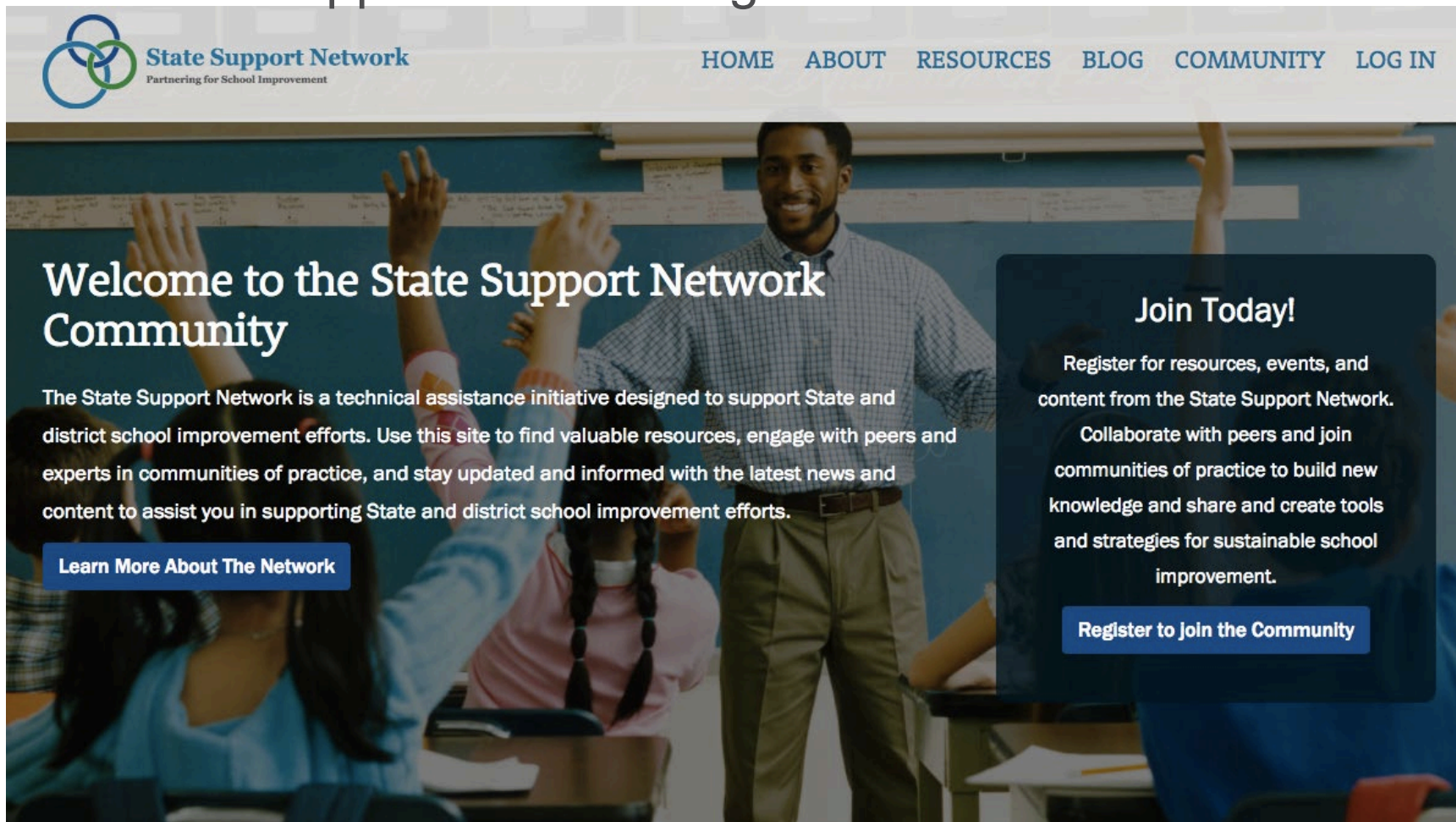


# Timeline of learning cycle (LC) activities




# Visit the online space

[www.statesupportnetwork.ed.gov](http://www.statesupportnetwork.ed.gov)



The background image shows a male teacher with a beard and a blue button-down shirt standing in front of a classroom. Several students are visible in the foreground, with their hands raised in the air, indicating an interactive learning environment. The teacher is smiling and looking towards the camera.

 **State Support Network**  
Partnering for School Improvement

[HOME](#) [ABOUT](#) [RESOURCES](#) [BLOG](#) [COMMUNITY](#) [LOG IN](#)

## Welcome to the State Support Network Community

The State Support Network is a technical assistance initiative designed to support State and district school improvement efforts. Use this site to find valuable resources, engage with peers and experts in communities of practice, and stay updated and informed with the latest news and content to assist you in supporting State and district school improvement efforts.

[Learn More About The Network](#)

### Join Today!

Register for resources, events, and content from the State Support Network.

Collaborate with peers and join communities of practice to build new knowledge and share and create tools and strategies for sustainable school improvement.

[Register to Join the Community](#)



# Foster Care Community of Practice

HOME

[Home](#)[Discussion Board](#)[Events Calendar](#)[Members](#)[Resource Library](#)

Children in foster care constitute a vulnerable population who have historically experienced consistently poor education outcomes relative to their peers with more stable family situations. Additionally, they also tend to experience a higher frequency of unscheduled school changes compared to their peers. As a group, children in foster care have significantly lower academic achievement and high school graduation rates, and significantly higher rates of absenteeism, grade retention, and exclusionary discipline.

This CoP will address the following topics:

- Overview of requirements of Fostering Connections and ESEA pertinent to improving educational stability for students in foster care
- Opportunities to learn from SEAs and state child welfare partners who have developed shared understanding, mutual commitments, clear collaborative processes, and common metrics for monitoring progress, improving methods, and demonstrating impact on significant student outcomes
- Examination of exemplary state laws and policies
- Sharing of state plans, policies, and protocols to receive feedback from other CoP participants, including activities that identify common issues across participants and sharing of practices/solutions peer participants have used to address those issues
- Opportunities to refine systems to support LEAs and community child welfare partners with their implementation

Click on '[Resource Library](#)' and go to "Member Tips and Tricks." We'll show you how to update your user

[Unsubscribe from space](#)  
[Discussion Board](#)  
[Events Calendar](#)  
[Resource Library](#)



# Discussion

Purpose to practice

# What is our *purpose*?

Using the Purpose to Practice model, consider what we, as a CoP, can accomplish together.

- Unmute to share or type in the chat box your ideas about the purpose/goals of this group.

# What is our *practice*?

Using the Purpose to Practice model, consider what you, as a member of the CoP, can do to help realize the goals.

- We will separate into three breakout groups of four members each.
- Briefly introduce yourself and answer these questions:
  - What can I individually contribute to this group?
  - What are some of the best ways I can help?
  - What will I commit to doing as a member of this group?

# Discussion

Topics for the CoP

# Proposed topics for the CoP

- Collaboration
- Transportation
- State data
- Local data
- Roles of POCs/monitoring

Are there any other topics you are interested in?

# Whiteboard activity

Under each topic, share what you know or would like to know related to the following questions:

- What are the biggest challenges or issues you have related to this topic?
- What is some of your best advice or strategies on this topic?
- Are there any places you know of doing good work, or any examples of tools or resources to share with others?

A top-down view of a group of people's hands and forearms stacked in a circle on a light-colored floor. The hands are of various skin tones, and the sleeves are of different colors and patterns, including stripes, plaid, and solid colors. The overall image has a light blue overlay.

# Poll

What are the top four topics you would like to work on together?

# Looking ahead

Plans for Learning Cycle 2 and beyond

# Order the topics for future CoPs

- State data (LC 2)
- Collaboration
- Transportation
- Local data
- Roles of POCs/monitoring

# Closing activities

Expectations and next steps

# Polling: Meeting objectives

Did this meeting help you to:

- Identify the mission, goals, and structure of the CoP?
- Identify topics and discussion priorities for Learning Cycles 2-5?
- Share examples and resources or questions and needs regarding the education of students experiencing foster care?

## Next steps

- You will receive an email invitation to join the online space in the next 24 hours. Please do not delete!
- Network staff will disseminate a brief reading from the National Working Group on Foster Care and Education, “Fostering Success in Education.”
- Post your response to the online space:  
Please share the portion of your ESEA state report card related to students in foster care. Were you involved in this process?

**Next learning cycle meeting – LC 2 will be October 24.**

# Thank you for joining us!

If you have any questions, feel free to contact us:

Kristin Kelly ([kristin.kelly@americanbar.org](mailto:kristin.kelly@americanbar.org))

Fanny Lee ([flee@air.org](mailto:flee@air.org))

This document was produced by American Institutes for Research under U.S. Department of Education contract number ED-ESE-15-A-0006. The content of this document does not necessarily reflect the views or policies of the U.S. Department of Education, nor does mention of trade names, commercial products, or organizations imply endorsement by the U.S. government. Authorization to reproduce this document in whole or in part for educational purposes is granted.