



Educational Technology, Media, and Materials for Individuals with Disabilities Program (ETechM2)

Stepping up Technology Implementation
84.327S



FY2024 Grant Competition Applicant Resource



What is ETechM2?

The purpose of the Educational Technology, Media, and Materials for Individuals with Disabilities Program (ETechM2 Program) is to improve results for children with disabilities by:



Promoting the development, demonstration, and use of technology



Supporting educational activities designed to be of educational value in the classroom for children with disabilities



Providing support for captioning and video description that is appropriate for use in the classroom



Providing accessible educational materials to children with disabilities in a timely manner

Eligibility and Funding Information



Eligible Entities

There are a wide range of institutions, organizations, and agencies eligible to apply for funding under the ETechM2 grant competition:

- SEAs;
- LEAs, including public charter schools that operate as LEAs under State law;
- IHEs;
- Other public agencies;
- Private nonprofit organizations;
- Freely associated States and outlying areas;
- Indian Tribes or Tribal organizations; and
- For-profit organizations.

Project Funding

The Department estimates making approximately 4 total awards. Each award includes between \$350,000 to \$375,000 for each 12-month budget period for up to 5 years.

4

Estimated number
of awards

\$375K

Estimated average
size of awards
(per year)

5

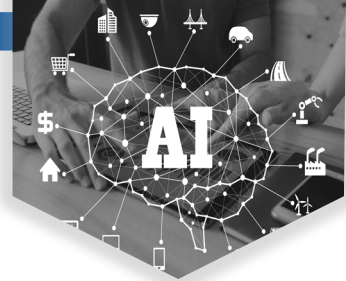
5 years is the total
project period

Note: The Department is not bound by any of these estimates. Funding is contingent on final congressional action and the quality of applications.



Absolute Priority

The Absolute Priority (AP) **must** be met for an application to be considered.



AP: Use of **Artificial Intelligence** (AI) to Meet Individual Needs of Students with Disabilities Through Learning and Assessment

The **purpose** of this priority is to fund cooperative agreements to establish and operate projects that achieve, at a minimum, the following expected outcomes:

Educator Collaboration

Improved educator collaboration and professional learning opportunities focusing on improving outcomes for student with disabilities using an evidence-based technology-based tool or approach using AI

Engagement

Improved educator and family engagement regarding the use of an evidence-based technology-based tool or approach using AI to support student learning

Sustained Use

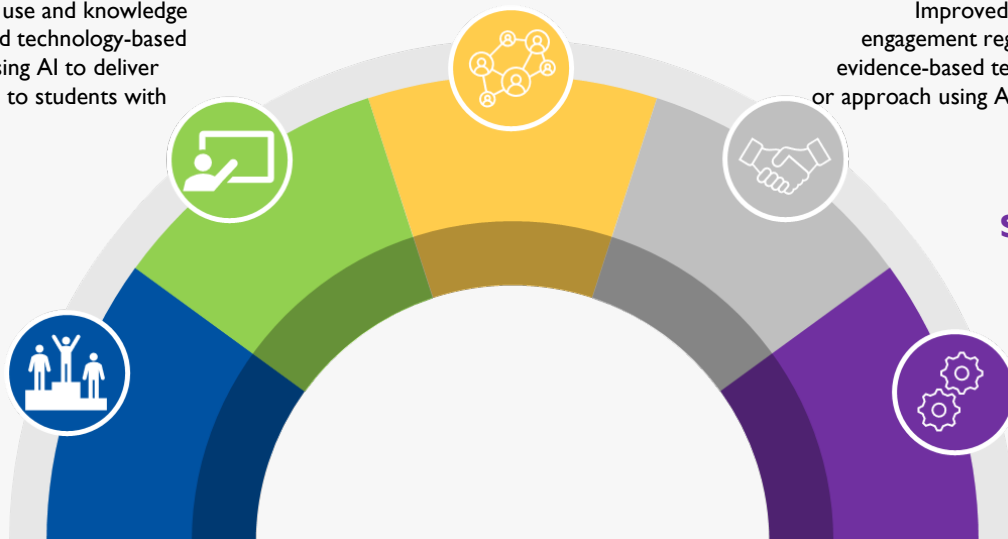
Sustained use of the evidence-based technology-based tool or approach using AI by aligning its use with existing instructional priorities and initiatives

Effective Instruction

Improved educator use and knowledge of an evidence-based technology-based tool or approach using AI to deliver effective instruction to students with disabilities

Outcomes

Improved student outcomes using an evidence-based technology-based tool or approach that integrates AI



To be considered for funding under this priority, in the application, applicants **must describe**:

- Technology-based tool or approach that utilizes AI
- Outcomes of students with disabilities that will be improved by tool or approach
- Approach to increase educators' use and knowledge of tool or approach
- Accessible products and resources that will help educators/families effectively use and implement tool or approach

Evidence Explained

For the purposes of the Absolute Priority, projects must meet at least the definition of “promising evidence,” which means that there is **evidence of the effectiveness of a key project component in improving a relevant outcome**



Evidence should be based on a relevant finding from one of the following:

- ❑ A practice guide prepared by the What Works Clearinghouse (WWC) reporting a “strong evidence base” or “moderate evidence base” for the corresponding practice recommendation;
- ❑ An intervention report prepared by the WWC reporting a “positive effect” or “potentially positive effect” on a relevant outcome with no reporting of a “negative effect” or “potentially negative effect” on a relevant outcome; or
- ❑ A single study assessed by the Department, as appropriate, that is an [experimental study](#), a [quasi-experimental design study](#), or a well-designed and well-implemented correlational study with statistical controls for selection bias (e.g., a study using regression methods to account for differences between a treatment group and a comparison group); and includes at least one statistically significant and positive (i.e., favorable) effect on a [relevant outcome](#).

How Can I Find Qualifying Evidence?

A good starting place is the Institute of Education Sciences’ What Works Clearinghouse. Evidence from WWC gives you information on the evidence tier, making it simpler to understand if it meets the requirements for the Mid-Phase projects.

- [Finding Evidence on What Works Clearinghouse Webinar](#).
- Review the [What Works Clearinghouse](#) to determine if there is an intervention report, practice guide, or individual study that has already been reviewed

Evidence does not have to already exist in WWC. See below for additional resources that may be helpful in finding relevant evidence:

- [ERIC](#) - a comprehensive, easy-to-use, searchable, Internet-based database of education research and information.
- [National Library of Education](#)- serves as the federal government’s primary education information resource to the public, education community, and other government agencies.

Other Application Elements

The application will be awarded based on applicants responding to the absolute priority, an *optional* competitive preference priority, and five selection criteria, described below.



Competitive Preference Priority: New Potential Grantees

Under this priority, an applicant must demonstrate that the applicant has not had an active discretionary grant under the 84.327S program from which it seeks funds, including through membership in a group application, in the five years before the deadline date for submission of applications under the program.

0 or 3 points

Selection Criteria



Significance: considers: (1) the significance of the problem or issue to be addressed by the project (2) the extent to which the specific gaps or weaknesses in services, infrastructure, or opportunities have been identified and will be addressed by the project (3) the potential contribution of the project to increased knowledge or understanding of educational problems, issue or effective strategies (4) potential replicability of the project strategies

15 points



Project Services: considers: (1) quality and sufficiency of strategies for ensuring equal access and treatment for eligible project participants who are members of groups that have traditionally been underrepresented and extent to which: (2) project services reflect up-to-date knowledge from research and effective practice (3) training or professional development services are of sufficient quality, intensity and duration to lead to improvements (4) project services involve the collaboration of appropriate partners to maximize effectiveness (5) project services are appropriate to the needs of intended recipients or beneficiaries and (6) the likely impact of services to be provided on the intended recipients

30 points



Project Evaluation: the extent to which: (1) methods of evaluation are thorough, feasible, and appropriate to the goals, objectives, and outcomes (2) methods of evaluation include use of objective performance measures that are clearly related to the intended outcomes (3) methods of evaluation provide for examining the effectiveness of project implementation strategies (4) methods of evaluation will provide performance feedback and permit periodic assessment of progress (5) evaluation plan clearly articulates key project components, mediators, and outcomes, as well as measurable threshold for acceptable implementation

20 points



Adequacy of Resources & Project Personnel:(1) extent to which the applicant encourages applications for employment from persons who are members of groups that have been historically underrepresented and (2) the qualifications, including relevant training and experience, of key project personnel, consultants and subcontractors. Also considers (3) the adequacy of support, including facilities, equipment, supplies, and other resources (4) the relevance and demonstrated commitment of each project partner (5) the extent to which costs are reasonable in relation to the objectives, design, and potential significance of the project

20 points



Management Plan: (1) the adequacy of the management plan to achieve the objectives on time, within budget, including clearly defined responsibilities, timelines and milestones. (2) extent to which time commitments of key personnel are appropriate and adequate to meet objectives (3) how the applicant will ensure that a diversity of perspectives are brought to bear in the operation of the project (4) the adequacy of the procedures for ensuring feedback and continuous improvement in operation of the project

15 points

How to Apply

The process can feel daunting, but preparing your organization properly and using Department of Education resources that are available will help make the applying more straightforward.



Preparation



Brainstorm project ideas



Search for evidence-based AI tools aligned to those ideas



Engage any potential partners for implementation

Applying

1 Review the Notice Inviting Applications

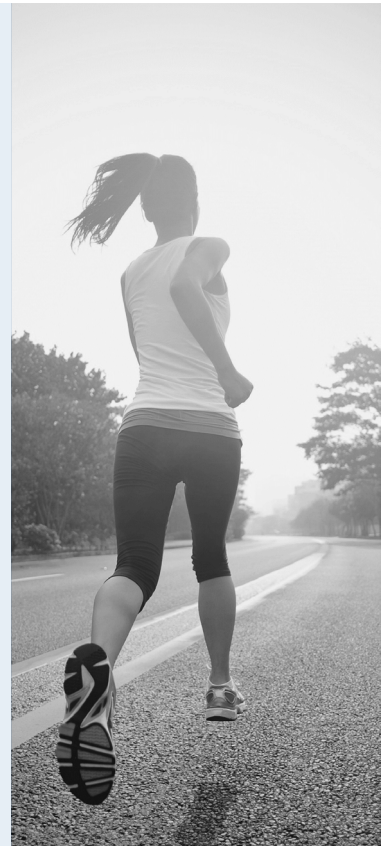
- The application package and forms will be available on the [Open OSEP Grants site](#) once the application period has opened.

2 Ensure that you have an active UEI (Unique Entity Identifier) number

- Entities who are not registered in SAM.gov will be assigned a UEI when they register
- To register in SAM.gov, click on the “Get Started” link under the “Register Your Entity...” heading in [SAM.gov](#).
- Please note that it can take 7-10 business days before you obtain a UEI number, so you’ll want to register at least 2-3 weeks prior to the application due date.

3 Apply for the ETechM2 grant!

- Visit the government-wide website, <http://www.grants.gov>.
- Enter “84.327S” in the search bar in the upper right.
- Click on the Opportunity Number in the search results and follow instructions after hitting “Apply.”



- It is strongly encouraged to familiarize yourself with grants.gov and **strongly recommend that you register and submit early.**
- Visit the [program website](#) for helpful information, frequently asked questions, dates of future webinars or workshops, and clarifications.



FAQs & Resources

Common questions can be seen below but if you have additional questions, please visit the program website or reach out directly via the contact information below.

How is “AI” being defined for this competition?

A machine-based system that can, for a given set of human-defined objectives, make predictions, recommendations, or decisions influencing real or virtual environments. Artificial intelligence systems use machine- and human-based inputs to perceive real and virtual environments; abstract such perceptions into models through analysis in an automated manner; and use model inference to formulate options for information or action.

What are Open Licensing requirements?

This requirement requires grantees to openly license deliverables created with grant funds and to publicly disseminate the products. Relevant copyrights and commercial trademarks can be granted exemptions from this requirement. For more information on exemptions and requirements, please contact the competition manager (below).

What is the timing to receive funding decisions?

Reviews of all applications are typically completed within 60 days after the application deadline of 4/30/24. Funds will be disbursed to grant awardees no later than September 30, 2024.

Helpful Links



[Program Website](#)



[Notice Inviting Applications \(NIA\)](#)

Point of Contact

Anita Vermeer, Competition Manager

Anita.Vermeer@ed.gov

202-987-0155

