

Got Results? Moving Up EIR Funding Tiers Lessons From Current Grantees

February 8, 2024



What impact do EIR grantees have?



The eMINTS Prosocial and Active Learning (PAL) Classrooms program gave veteran teacher, Amy, back her reason for being a teacher and brought back her drive to do what she once loved.



DEFINING SCALING UP

What do we mean by the term, “Scaling Up”?

Scale is multidimensional⁽¹⁾. It requires:

- Depth** - Deep and consequential change in classroom practice
- Sustainability** - Lasting over time, particularly after the initial implementation push
- Spread** - Moving beyond practices and materials to underlying beliefs, norms, and principles
- Ownership** - Shifting from an external reform to the way business is done

¹COBURN, CYNTHIA E. (2003). *RETHINKING SCALE: MOVING BEYOND NUMBERS TO DEEP AND LASTING CHANGE*. EDUCATIONAL RESEARCHER. VOL 32, NO. 6. P 4.



GRANTEE EXPERIENCES SUGGEST FOUR STRATEGIES CRITICAL TO SCALING UP EVIDENCE-BASED PRACTICES

Based on lesson learned from nine i3 grantees who scaled up to serve over 1.2 million students



Use multiple methods to establish buy in



Build a regional and national infrastructure



Adapt practice based on evidence



Plan for sustainability from day one

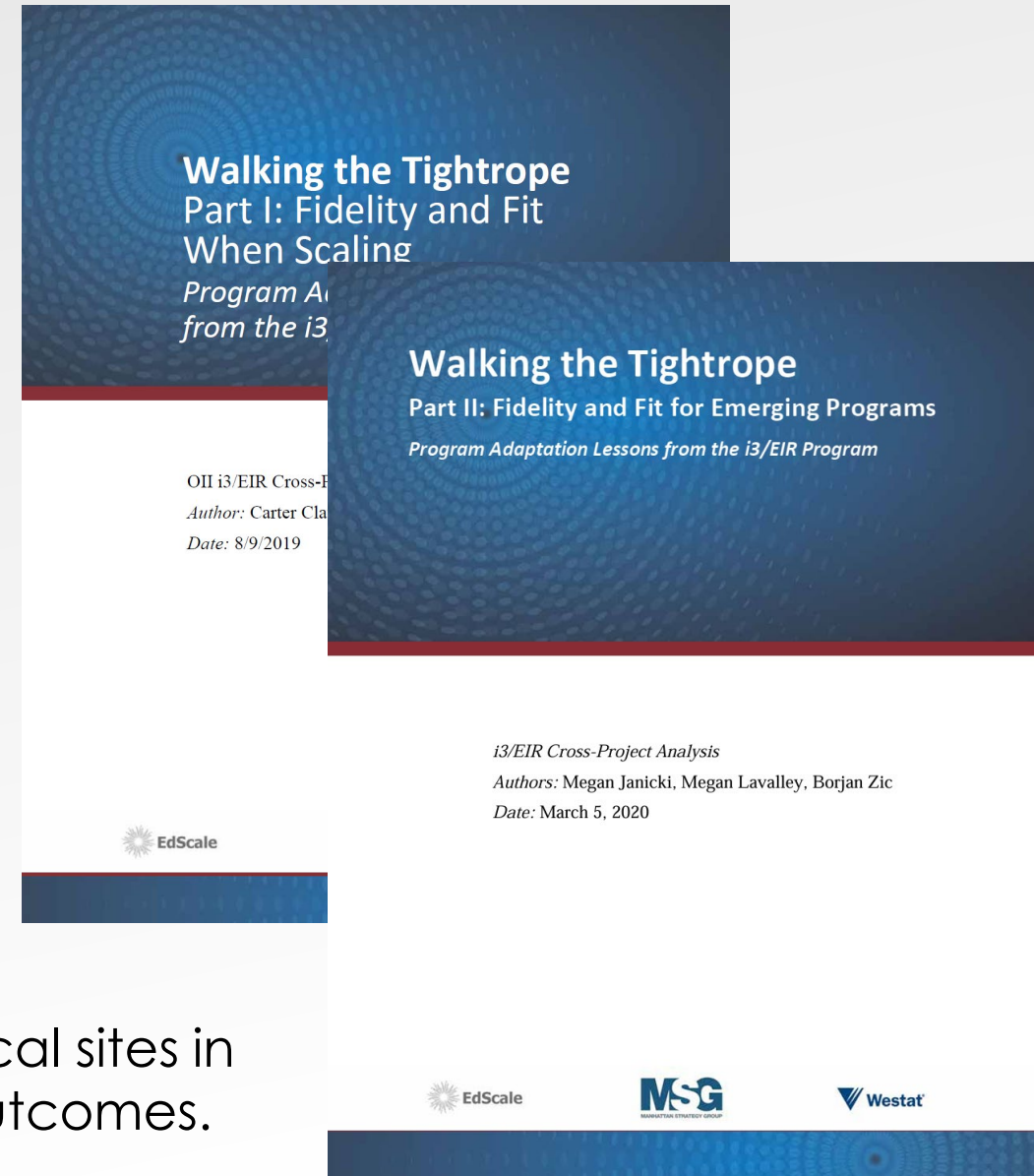


FIDELITY AND FIT

Fidelity is the degree to which a program is implemented as it was intended by its designers.

Fit is the degree to which a program is suited to the specific conditions of a site.

Core Question: How can we authentically support local sites in adapting our program while maximizing program outcomes.



Got Results? Moving Up EIR Funding Tiers Lessons From Current Grantees



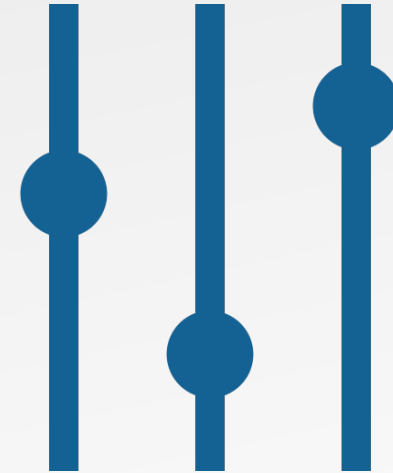
Tom DeWire
Founder, Principal Consultant
EdScale, LLC
edscalellc.com



Key Insights from Grantee Scaling Approaches

Leveraging Key Features of EIR Grants

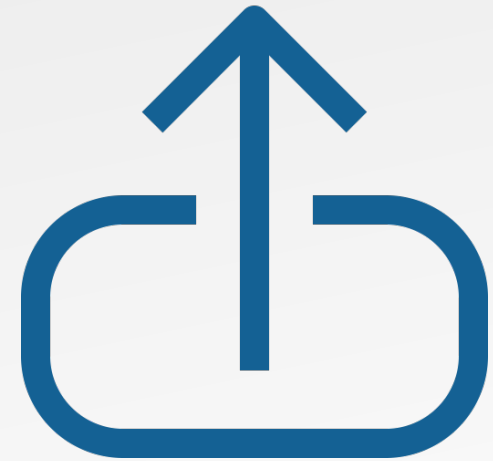
1. Responsible scaling using the EIR funding tiers
2. Leveraging external evaluator expertise
3. Planning for scale from the beginning
4. Building internal and local capacity
5. Leveraging digital tools to support scaling



Key Insights from Grantee Scaling Approaches, con't.

Leveraging Results from Evaluation Studies

6. Using evaluation studies to establish a track record for the model
7. Using evaluation studies to identify core program components



Grantee Panelists



Margaret Troyer
Director of Literacy
Research & Development
STARI/SERP Institute



2017: Mid-phase Grant
2022: Expansion



Kate Bauer-Jones
Executive Director
Future Forward



2017: Mid-phase Grant
2021: Expansion



Cristina Heffernan
Executive Director
ASSISTments Foundation



2019: Mid-phase
2021: Mid-phase
2022: Mid-phase



Cara Wylie
Director
eMINTS



2018: Early-phase
2020: Early-phase
2022: Early-phase
2022: Mid-phase
2023: Mid-phase



Grantee Experiences Scaling through EIR Funding Tiers

Panelist Q & A



SAVE THE DATE!

3/13 @ 1pm ET

Scale Up & Sustainability Problem of Practice Session

Continue the conversation and learn more about the paper
Opportunity for live coaching! Sign up here:

